

F-35A Training Basing

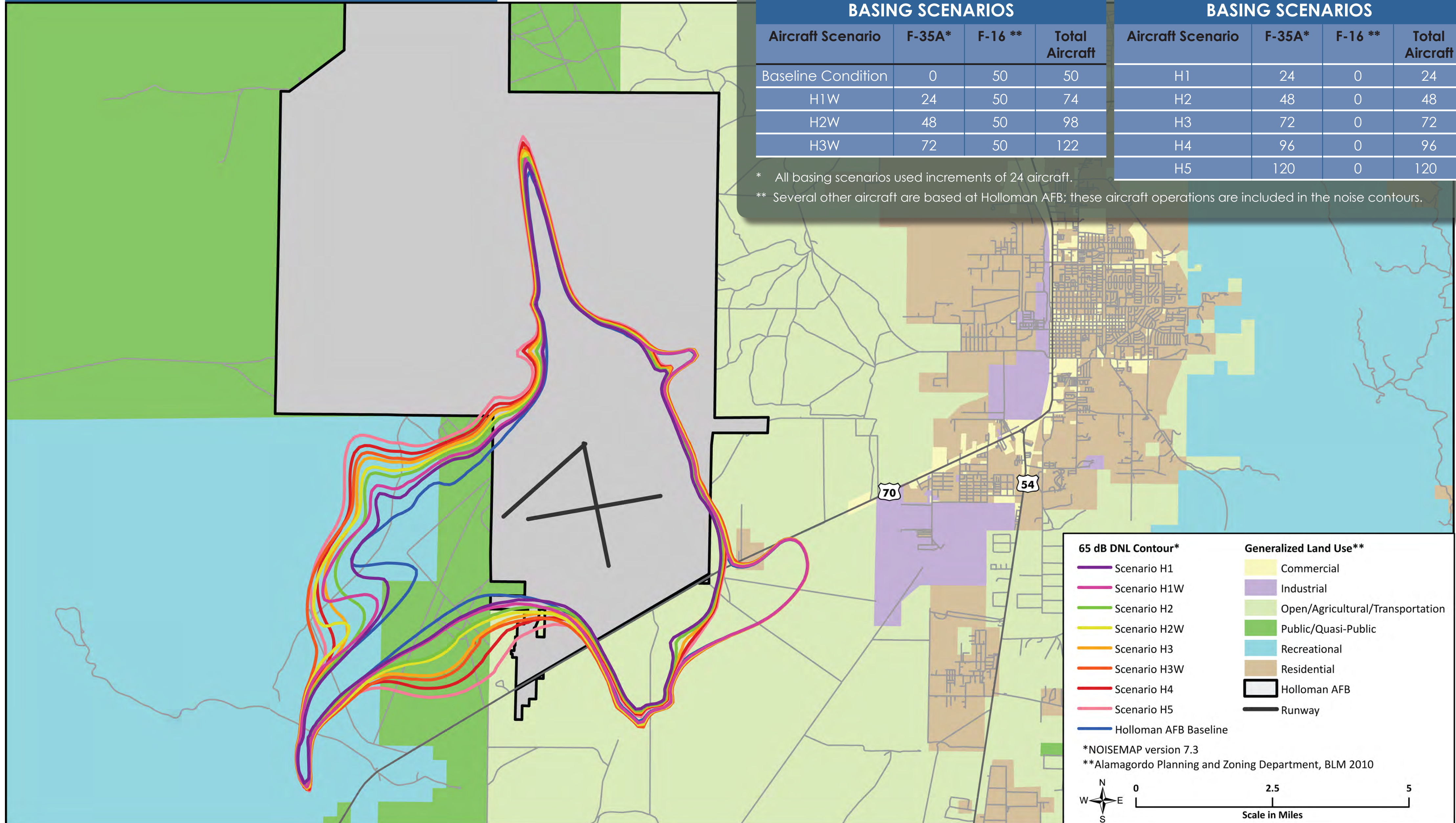
ENVIRONMENTAL IMPACT STATEMENT

NOISE CONTOURS WITH F-35A AIRCRAFT AT HOLLOWAN AFB



The Air Force assessed basing up to 120 F-35A training aircraft at Holloman AFB.

Land Use and Noise Contours: Holloman AFB



HOLLOWAN AFB AIRCRAFT BASING SCENARIOS			
Aircraft Scenario	F-35A*	F-16 **	Total Aircraft
Baseline Condition	0	50	50
H1W	24	50	74
H2W	48	50	98
H3W	72	50	122

HOLLOWAN AFB AIRCRAFT BASING SCENARIOS			
Aircraft Scenario	F-35A*	F-16 **	Total Aircraft
H1	24	0	24
H2	48	0	48
H3	72	0	72
H4	96	0	96
H5	120	0	120

* All basing scenarios used increments of 24 aircraft.
 ** Several other aircraft are based at Holloman AFB; these aircraft operations are included in the noise contours.

65 dB DNL Contour*

- Scenario H1
- Scenario H1W
- Scenario H2
- Scenario H2W
- Scenario H3
- Scenario H3W
- Scenario H4
- Scenario H5
- Holloman AFB Baseline

Generalized Land Use**

- Commercial
- Industrial
- Open/Agricultural/Transportation
- Public/Quasi-Public
- Recreational
- Residential
- Holloman AFB
- Runway

*NOISEMAP version 7.3
 **Alamagordo Planning and Zoning Department, BLM 2010

Scale in Miles: 0, 2.5, 5